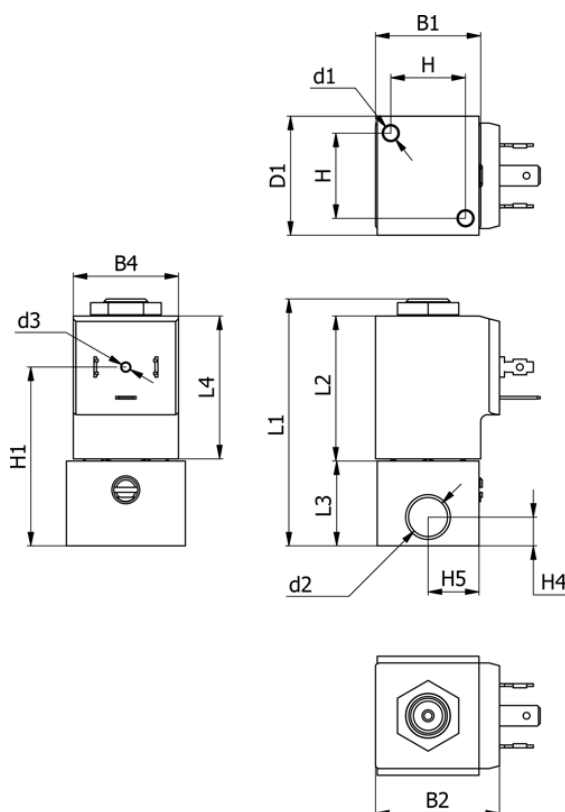


Varenummer: 588Q2C408BB0666
 Beskrivelse: Magnetventil type Q2C408.BB0.666 2/2 NC
 12 VDC dyse 0,8 hus i Messing Portstr. G1/4"

Mål



B1 = 30	H1 = 52.5	Lysning = 0.8
B2 = 36	H2 = 25	Spænding = 12 VDC
B4 = 31	H3 = 22	Ventilfunktion = 2/2 NC
d1 = M5x10	H4 = 8.5	
D1 = 35	H5 = 15	
d2 = G1/4"	L1 = 72.6	
d3 = M3x4	L2 = 42.5	
Flow = 0.5	L3 = 25	